

Outperforming a traditional balanced allocation with a markedly lower volatility and a lower maximum drawdown, through a disciplined, smart and dynamic asset allocation. We call it Betalphing®, a two-steps investment methodology that aims to generate outperformance above the benchmark (also called "Alpha") through an optimized asset allocation model.

In other words, **to get 'Alpha' through the best 'Beta' Allocation**

Net assets EUR : 59.42 M

October 31, 2018

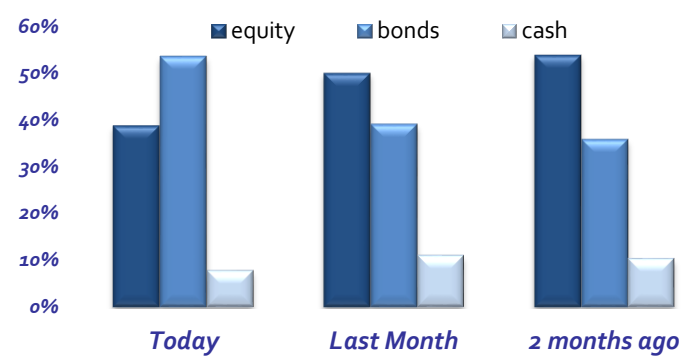
	share	NAV	ytd	ISIN	Mg.Fee	2017	2016	2015	2014	2013	2012	2011	2010	2009	inception
eur Institutional	A EUR	165.91	-3.68%	LU0415020451	0.66%	5.77%	4.15%	2.69%	8.36%	8.85%	9.93%	-1.55%	9.76%	8.71%	jun'09
eur platform	C EUR	109.26	-4.12%	LU1353746792	1.16%	5.09%	8.46%								feb'16
eur	B EUR	148.79	-4.51%	LU0415023042	1.66%	4.49%	2.97%	1.46%	6.95%	7.69%	8.55%	-2.56%	8.26%	8.27%	jun'09
usd \$ hedged	H-USD	133.97	-2.27%	LU0847086583	1.16%	6.59%	4.44%	2.02%	7.60%	8.65%	3.27%				nov'12
sterl. £ hedged	H-GBP	110.94	-3.44%	LU1353746875	1.16%	5.74%	8.69%								feb'16
sing \$ hedged	H-SGD	130.87	-2.89%	LU0847086401	1.16%	6.29%	4.75%	2.43%	7.46%	8.61%	1.27%				nov'12

***New Clean Shares launched Apr '18: LU1805616502 (EUR) & LU1805616684 (USD) with the lowest Management Fee: 0.66%**

Portfolio Top 25 ETFs

Xtrackers II Global Government Bond UCITS ETF	7,21%
Xtrackers II Japan Government Bond UCITS ETF	6,98%
SPDR Bloomberg Barclays U.S. Treasury Bond UCITS ETF	5,71%
Invesco Consumer Staples S&P US Select Sector UCITS ETF	4,96%
Lyxor Smart Cash USD	4,70%
Lyxor EuroMTS 10-15Y Investment Grade DR UCITS ETF	4,46%
iShares S&P 500 Health Care Sector UCITS ETF	4,27%
iShares USD Treasury Bond 20+yr UCITS ETF	4,21%
Amundi Msci EM Asia UCITS ETF	3,06%
iShares EUR Govt Bond 15-30yr UCITS ETF	2,98%
SPDR S&P U.S. Financials Select Sector UCITS ETF	2,97%
Invesco EQQQ Nasdaq-100 UCITS ETF	2,50%
Invesco Consumer Discret. S&P US Select Sector UCITS ETF	2,49%
iShares Global Govt Bond UCITS ETF	2,27%
Lyxor EuroMTS Highest Rated Macro Govt Bond UCITS ETF	2,21%
Lyxor FTSE 100 UCITS ETF	2,06%
Vanguard FTSE Asia Pacific ex Japan UCITS ETF	1,92%
Invesco Technology S&P US Select Sector UCITS ETF	1,76%
iShares Healthcare Innovation UCITS ETF	1,74%
Vanguard FTSE Japan UCITS ETF	1,71%
Xtrackers MSCI World Energy UCITS ETF	1,70%
Xtrackers II iBoxx Eurozone GovBond Yield Plus UCITS ETF	1,65%
Amundi Japan Topix UCITS ETF	1,60%
SPDR S&P U.S. Industrials Select Sector UCITS ETF	1,46%
SPDR S&P U.S. Comm. Services Select Sector UCITS ETF	1,36%

Asset Allocation



Duration

Fixed income: 9.37 Total Portfolio: 5.32

Currency

EUR: 51%; USD: 49% (1/2 hedged)

Volatility

3 mths vol 5.65%; 1 year vol 6.99%

1 month VAR

99% confidence, 1yr historical data: 4.82%

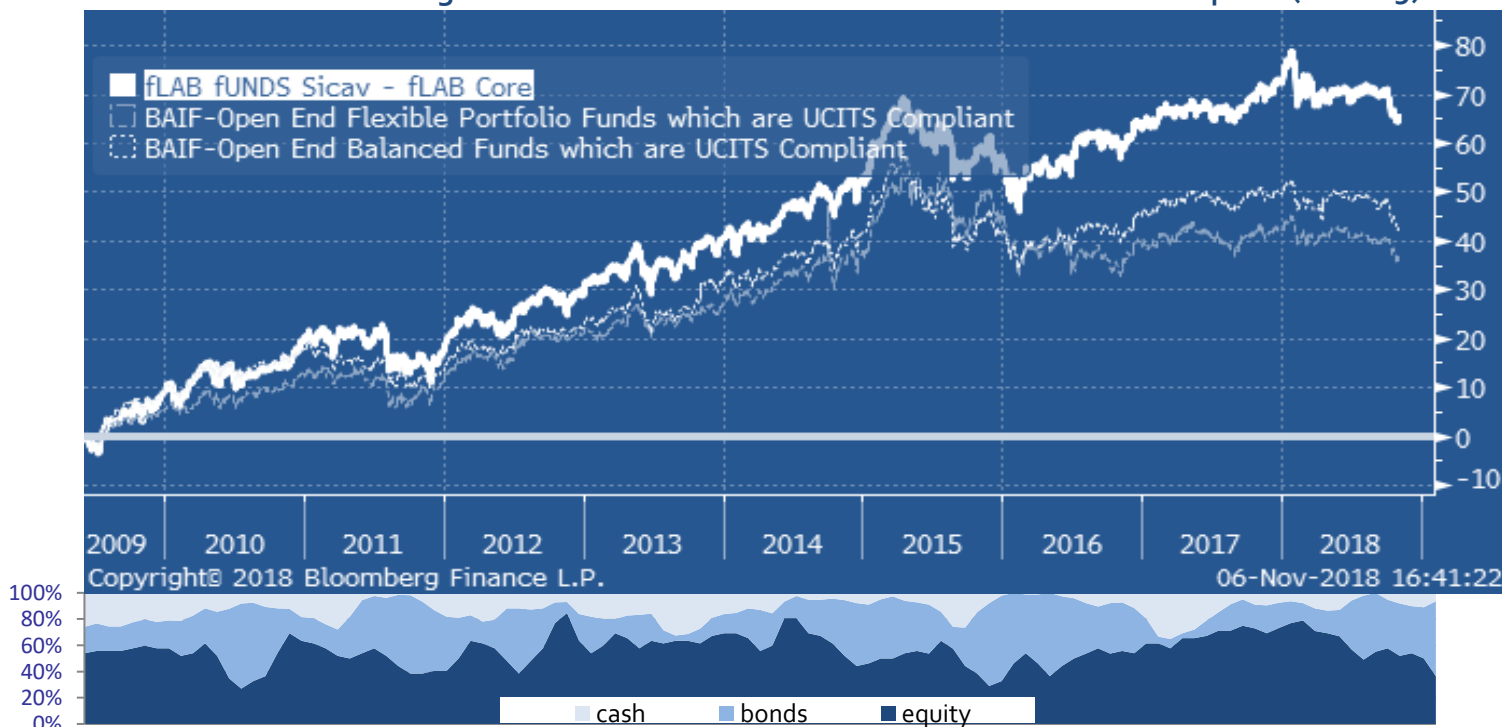
Sharpe Ratio

3 yr: 0.43 5yr: 0.71

Correlation Matrix, fLAB Core vs:

MSCI World	World Gov Bond Aqq	World Inv Grade
0.67	0.07	0.09
Gold Spot	Commodity Index	Eur/Usd
0.04	0.38	-0.04

fLAB Core A vs. Bloomberg Balanced & Flexible UCITS Funds Worldwide since inception (June '09)



5 yr Ranking, June 2013 to June 2018





LIPPER LEADERS 

MORNINGSTAR

fLAB Core

fLAB Fund SICAV Core A | ★★★★★

fLAB Fund SICAV Core H-USD | ★★★★★

Total Return 
Consistent Return 
Preservation 
Expense Ratio 

citywire  GOLD

FE CROWN FUND RATING 

Funds 2017 people 

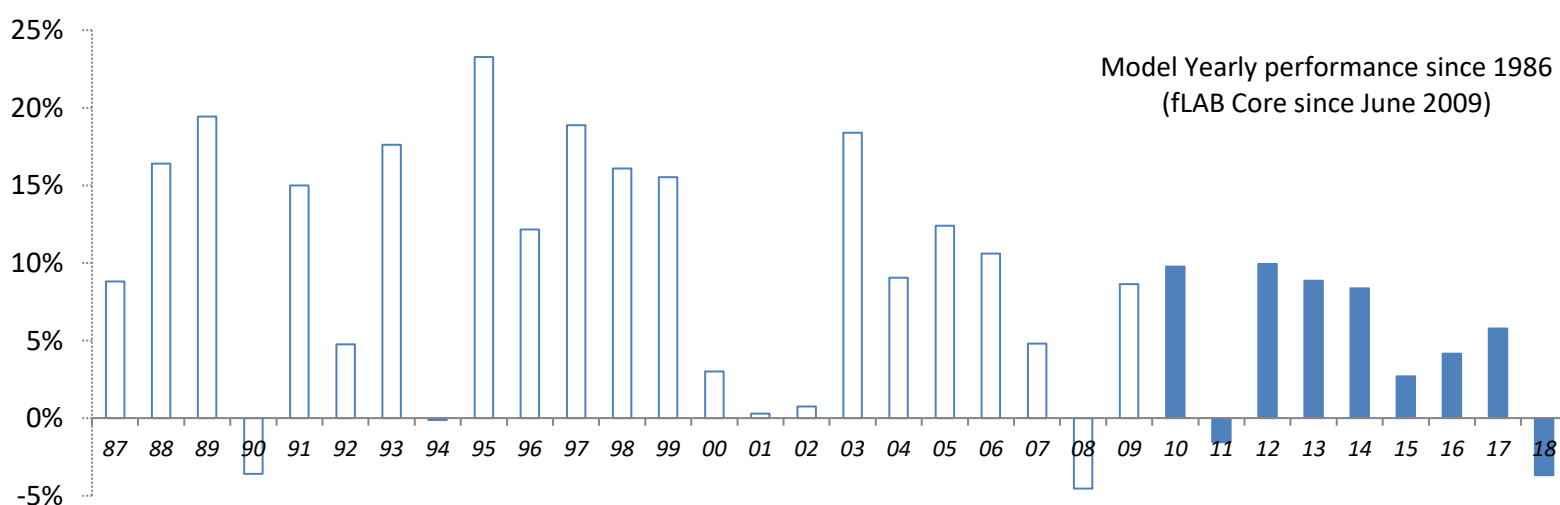
Model Results: 1986 to 2008 (in %);

1986	'87	'88	'89	'90	'91	'92	'93	'94	'95	'96	'97	'98	'99	2000	'01	'02	'03	'04	'05	'06	'07	'08
8.91	8.81	16.41	19.43	3.60	15.00	4.75	17.61	-0.13	23.27	12.16	18.87	16.08	15.53	3.01	0.29	0.75	18.40	9.03	12.40	10.59	4.79	-4.55

fLAB Core-A Performance since 2009

'09	'10	'11	'12	'13	'14	'15	'16	'17	'18
8.71	9.76	-1.55	9.93	8.85	8.36	2.69	4.15	5.77	-3.68

Annual Yield Since Inception
5.52%



Technical information

Currency: EUR /USD/GBP/ SGD **Minimum Initial Subscription:** 1 Million € (A Institutional Share Class),
10 EUR (B, C and Clean share classes); 10 USD/GBP/SGD (Hedged Share Classes and Clean Shares)

Management fee: 0.66% (A share & Clean Shares); 1.16% (C share); 1.66% (B share); 1.16% (H USD, H GBP
and H SGD shares) **Suspension & Redemption Fee :** 0%

Performance fee: a percentage of the annual performance of the
compartment: 5% (A share & Clean Shares); 7.5% (C share); 10% (B share); 7.5% (H USD, H GBP & H SGD
shares, with high watermark

Share classes TER (2017): A 1.08%; C 1.42%; B 2.12%; H-USD 1.62%; H-GBP 1.61%; H-SGD 1.56%

Management Company: Casa4Funds

Investment advisor: Market LAB Luxembourg S.à r.l.

Custodian Bank: Banque et Caisse d'Épargne de L'État Luxembourg (BCEE: Aa2/AA+)

Transfer & Paying Agent: EFA, European Fund Administration

Net Asset Value, Reporting & Liquidity: daily

*Disclaimer: This Fund is authorised in the Grand Duchy of Luxembourg and regulated by the "Commission de Surveillance du Secteur Financier" (CSSF)
The historical performance graph, Awards, Sharpe Ratio, Correlation, Volatility and VAR are calculated using the oldest share class: fLAB Core A
Inception was in June 2009, under a SIF structure. In February 2016 it was converted into a full UCITS structure.*